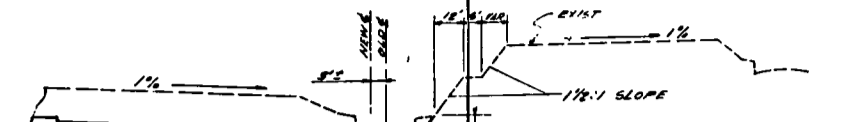
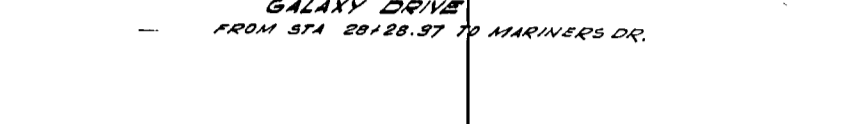


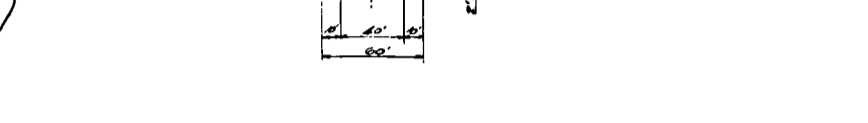
TYPICAL SECTION GALAXY DRIVE FROM STA. 513+45 TO STA. 52+30



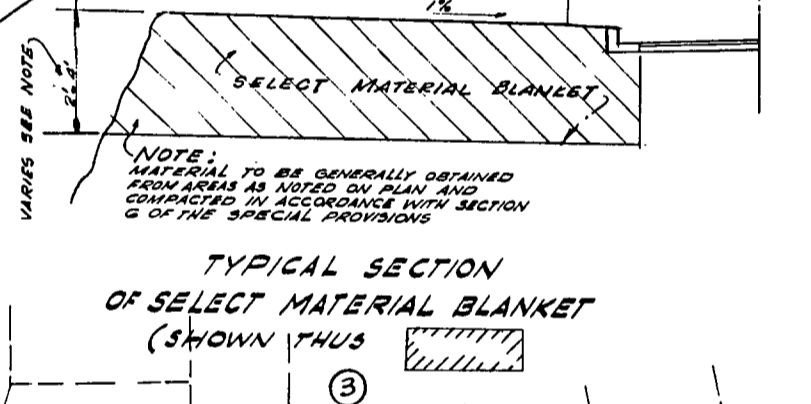
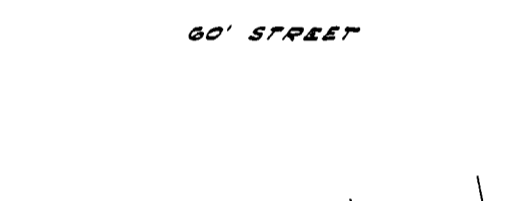
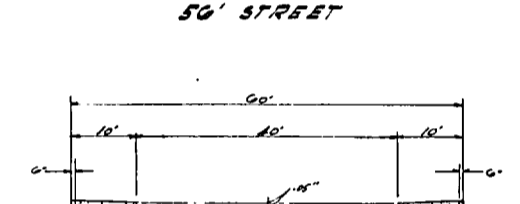
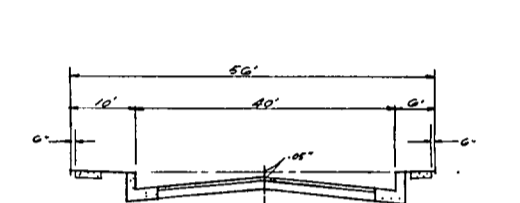
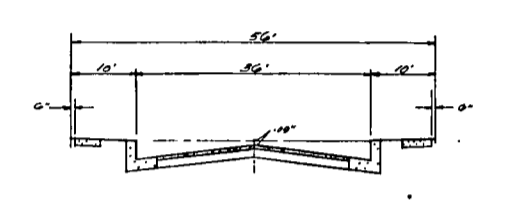
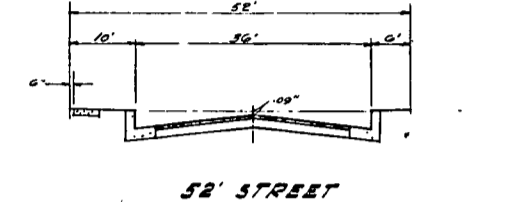
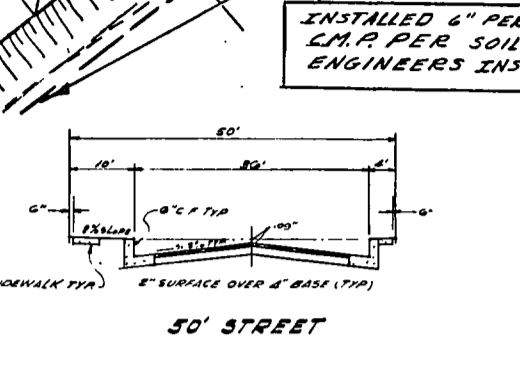
TYPICAL SECTION GALAXY DRIVE FROM STA. 59+28.97 TO MARINERS DR.



TYPICAL SECTION GALAXY DRIVE FROM MARINERS DR. TO STA. 60+45.80



TYPICAL SECTION GALAXY DRIVE FROM STA. 60+45.80 TO STA. 60+64.52



TYPICAL SECTION OF SELECT MATERIAL BLANKET (SHOWN THUS)

**NOTES:**  
 ALL WORK SHALL CONFORM TO THE STANDARD SPECIFICATIONS OF THE CITY OF ANAHEIM READY FOR SPECIAL PROVISIONS AND THE REQUIREMENTS OF THE SOILS ENGINEER'S REPORT.  
 EMBANKMENT PROTECTION IN DISPOSAL AREA NO. 1 SHALL BE SPREAD BY BEDDING OF DOINGS IN 6" LIFTS.

**NOTE:**  
 ALL SLOPES TO BE 1:1 UNLESS OTHERWISE NOTED.  
 TENTATIVE APPROVAL ONLY. FINAL APPROVAL SHALL BE OBTAINED FROM THE CITY OF ANAHEIM READY FOR SPECIAL PROVISIONS AND THE REQUIREMENTS OF THE SOILS ENGINEER'S REPORT.  
 CONTROL NOT INCLUDED IN THIS APPROVAL.

**DATUM PLANE**  
 CITY OF COSTA MESA DATUM  
 M.S.L.W. = 810 COSTA MESA

D.P. 02  
 DATE: 1/25/62  
 APPROVED THIS 22<sup>ND</sup> DAY OF JAN. 1962

AS BUILT

William A. Boyle, R.E. 2461  
 BOYLE ENGINEERING  
 APPROVED THIS 26<sup>TH</sup> DAY OF JAN. 1962  
 Russell C. Allen, R.E. 1854

PREPARED IN THE OFFICE OF  
 Boyle ENGINEERING  
 CONSULTING ENGINEERS  
 831 SPRINGFIELD BUILDING  
 SANTA ANA, CALIFORNIA  
 PHONE: 431-1141

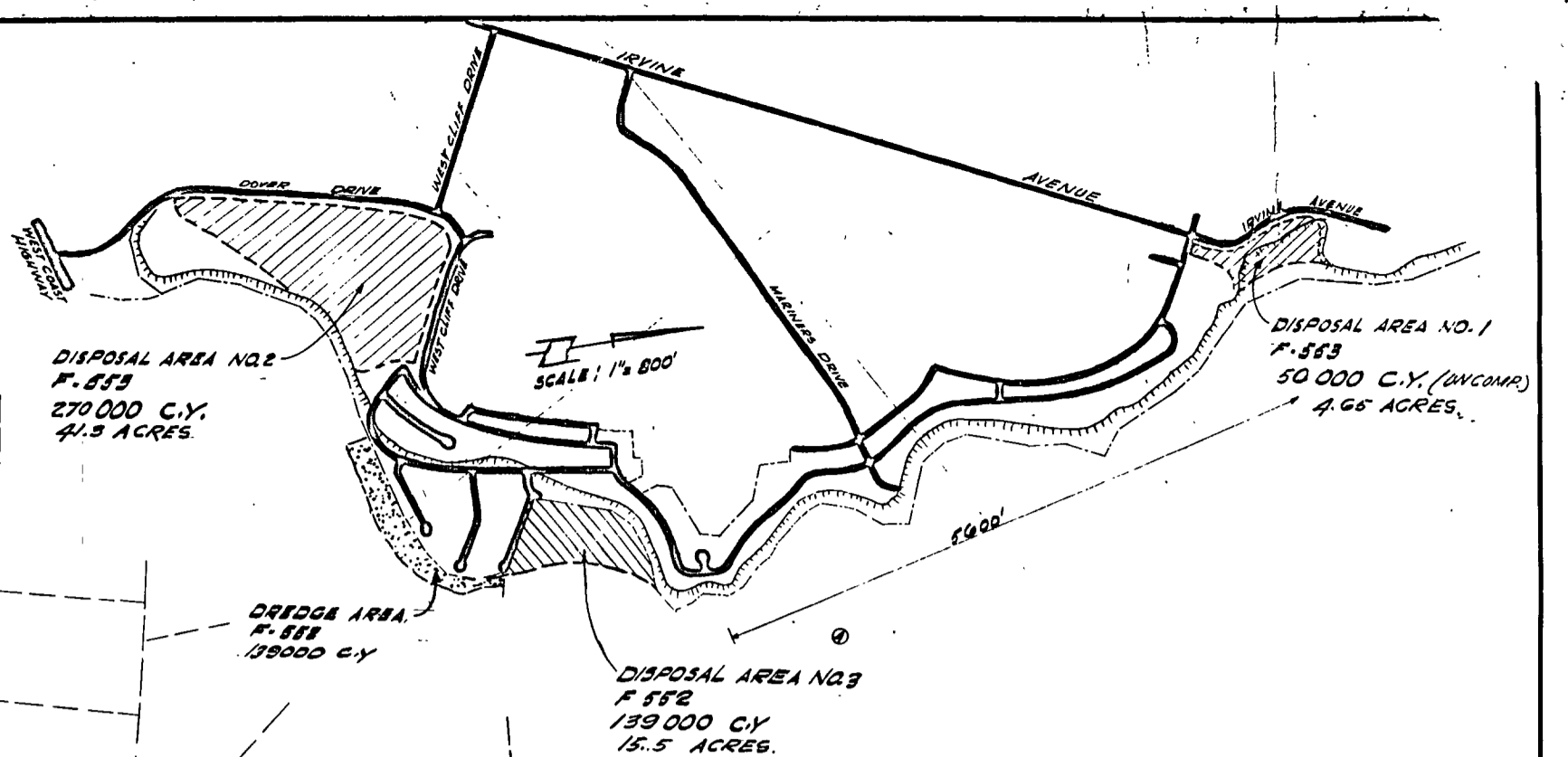
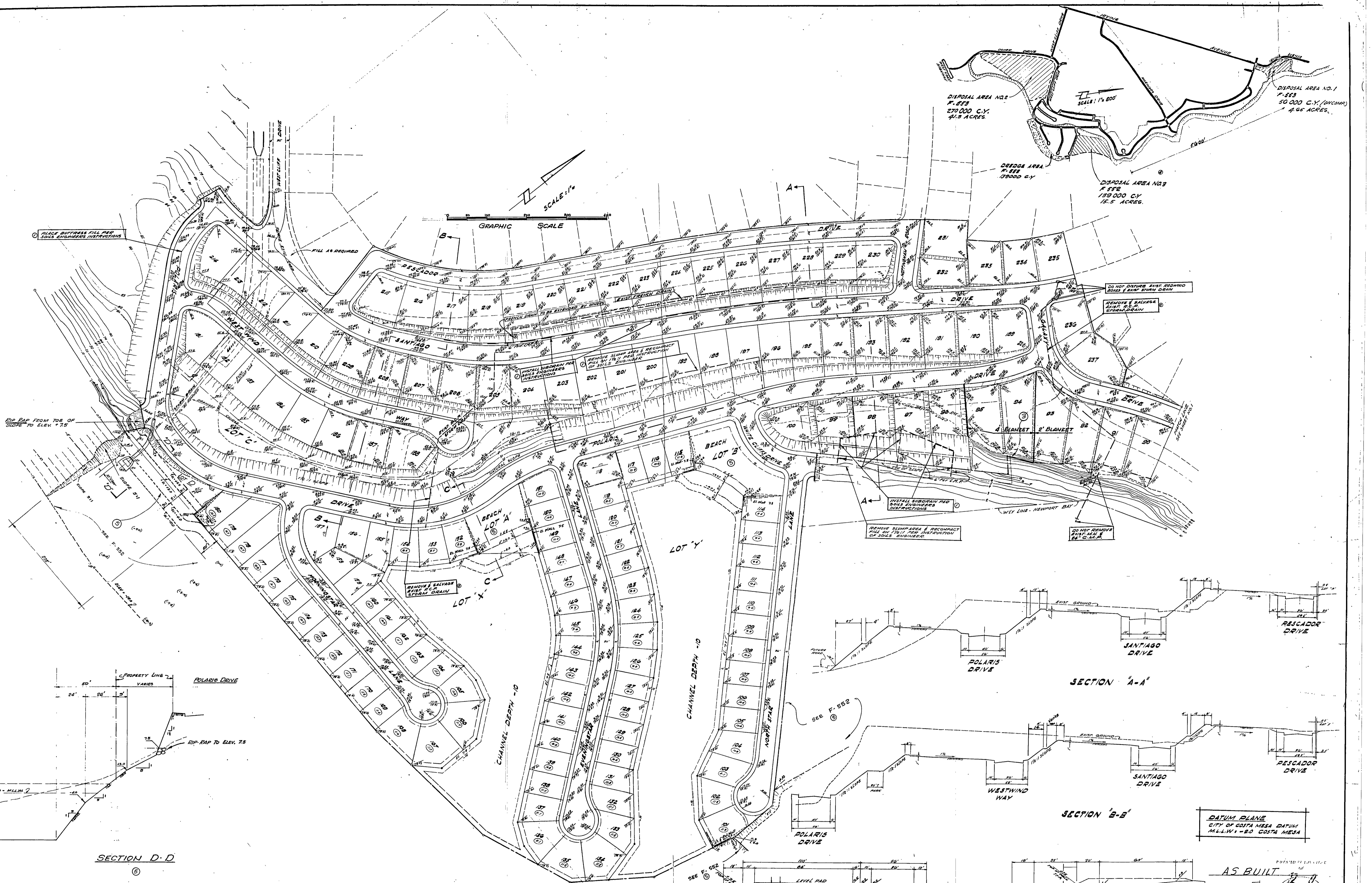
**ESTIMATE OF QUANTITIES**

EXCAVATION		EMBANKMENT	
ON SHORE (INC. UNDERCUT)	650,000 CY	ON SHORE	300,000 CY
UNSATURATED	30,000 CY		
<b>TOTAL:</b>	<b>680,000 CY</b>		
<b>BEDDING</b>		<b>HYDRAULIC FILL</b>	
MAIN CHANNEL	150,000 CY	DISPOSAL AREA NO. 3 - 150,000 CY	
LOTS A & Y	170,000 CY	MARINA AREA	170,000 CY
<b>TOTAL:</b>	<b>320,000 CY</b>	<b>TOTAL:</b>	<b>320,000 CY</b>

**NOTES:**  
 BEDDING & EMBANKMENT NOT INCLUDED IN QUANTITIES  
 DISPOSAL AREA & EMBANKMENT QUANTITIES NOT INCLUDED IN QUANTITIES

DATE	REVISION	APPROVED	RECORDED
1-25-62	AS BUILT		
1-25-62	CHANGE IN ESTIMATE OF QUANTITIES		
1-25-62	CHANGE IN ESTIMATE OF QUANTITIES		
1-25-62	CHANGE IN ESTIMATE OF QUANTITIES		
1-25-62	CHANGE IN ESTIMATE OF QUANTITIES		

**GRADING PLAN**  
**TRACT NO. 4884**  
 CITY OF NEWPORT BEACH  
 PUBLIC WORKS DEPARTMENT  
 DRAWING NO. 1010



PLACE BUTTRESS FILL PER SOAS ENGINEERS INSTRUCTIONS

FILL AS REQUIRED

GRAPHIC SCALE

SCALE: 1" = 100'

DO NOT DISTURB EXIST. REDWOOD BUSHES & VEGETATION

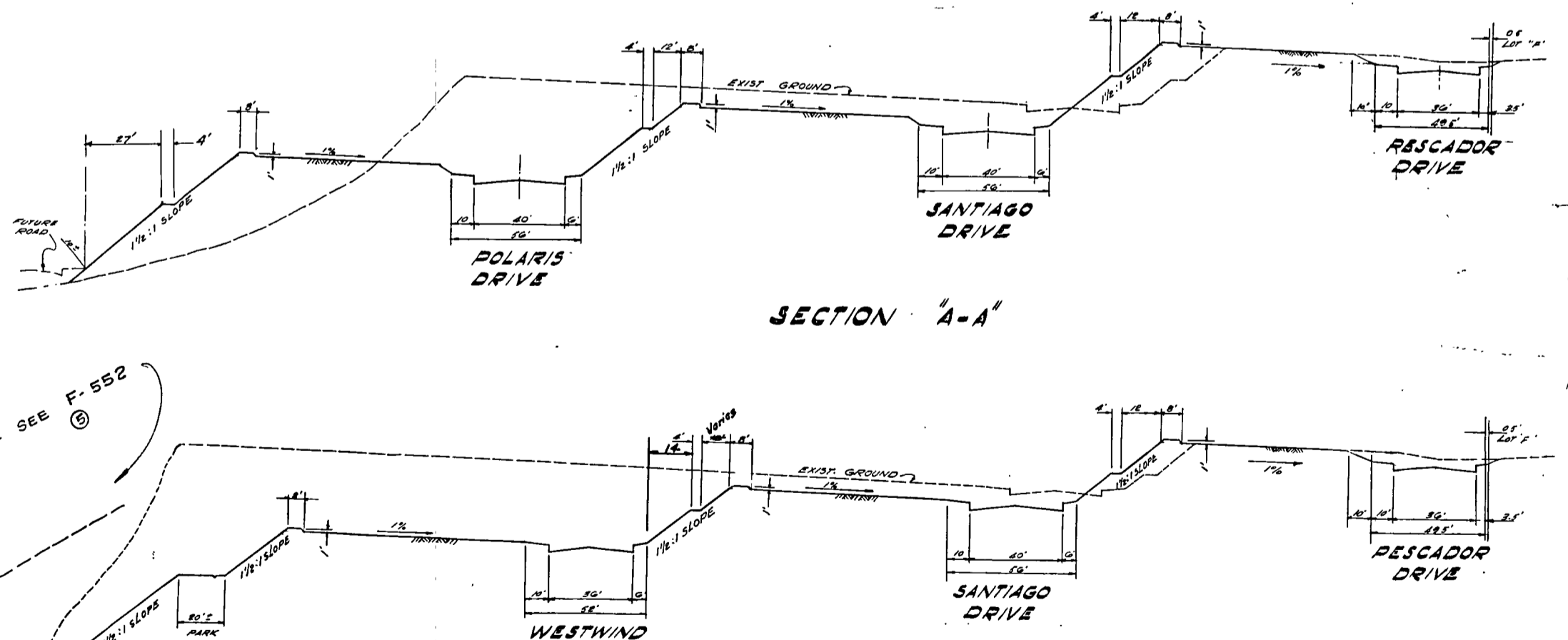
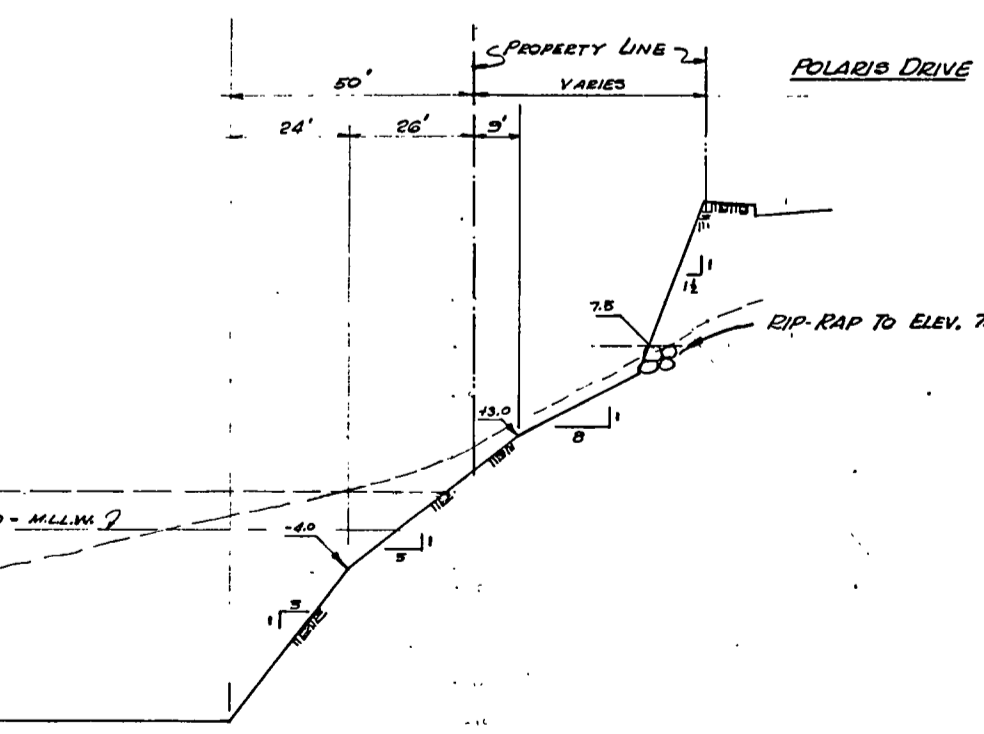
REMOVE & SALVAGE EXIST. P.E.C. STORM DRAIN

INSTALL SUBDRAIN PER SOAS ENGINEERS INSTRUCTIONS

REMOVE SLUMP AREA & RECOMPACT FILL ON 17% FOR INSTRUCTION OF SOAS ENGINEERS

DO NOT REMOVE EXIST. MANHOLE & 24" C.M.H.P.

EXIST. RAP FROM TOP OF SLOPE TO ELEV. +7.5

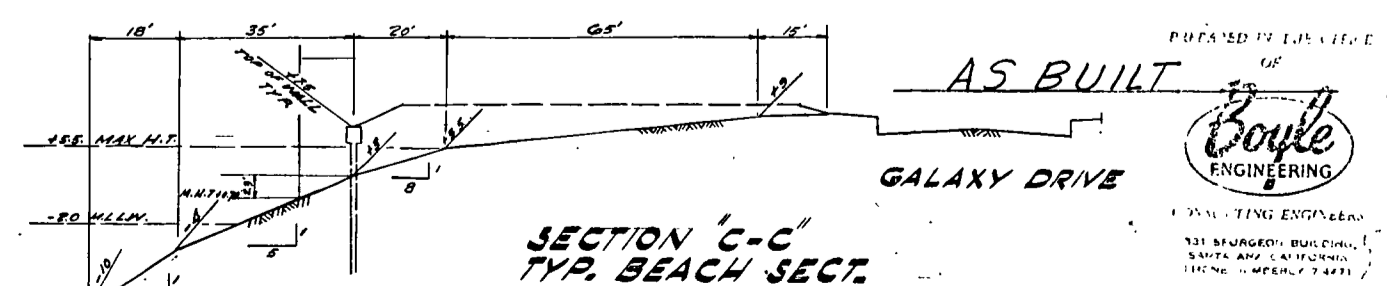


DATUM PLANE  
CITY OF COSTA MESA DATUM  
MILLING - 80 COSTA MESA

SECTION D-D

TYPICAL SECT. FOR LOTS ON  
MORNING STAR LANE  
EVENING STAR LANE  
NORTH STAR LANE

⑥ DEVOTED LEVEL PAD ELEVATIONS



DATE	REVISION	APPROVED	APPROVED
01/24/00	AS BUILT	BOULE ENGINEERING	CITY OF COSTA MESA
01/24/00	REVISED	BOULE ENGINEERING	CITY OF COSTA MESA
01/24/00	REVISED	BOULE ENGINEERING	CITY OF COSTA MESA
01/24/00	REVISED	BOULE ENGINEERING	CITY OF COSTA MESA
01/24/00	REVISED	BOULE ENGINEERING	CITY OF COSTA MESA

GRADING PLAN  
TRACT NO. 422A  
CITY OF COSTA MESA  
PUBLIC WORKS DEPARTMENT

2 OF 2

