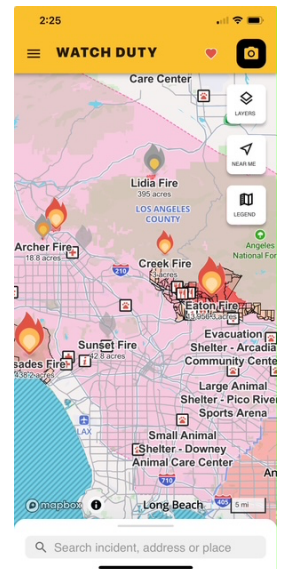


Dover Shores CERT

January 11, 2020

- Introductions
- Tour of facility
- Newport Notified – Everyone should be signed up to receive notifications from the NBPD here: <https://www.nbpd.org/what-s-new/newport-notified>
- Watch Duty – We encourage everyone to install this app on your phone. We will demonstrate its use at the meeting:
- Social media – suggestions for social media to follow
- Activation – We will discuss when and how we will activate Dover Shores CERT.
- [Barricade Fire Gel](#) – Show and tell about this product and how it could save your home.
- Go bag and evacuation – discussion about what should be in your go bag and things you should do to prepare for evacuation and during evacuation:



[CalFire Evacuation Guide](#)

- Hardening your house – discussion about things you can do to make your home more fire resistant:

[CalFire – Hardening Your Home](#)

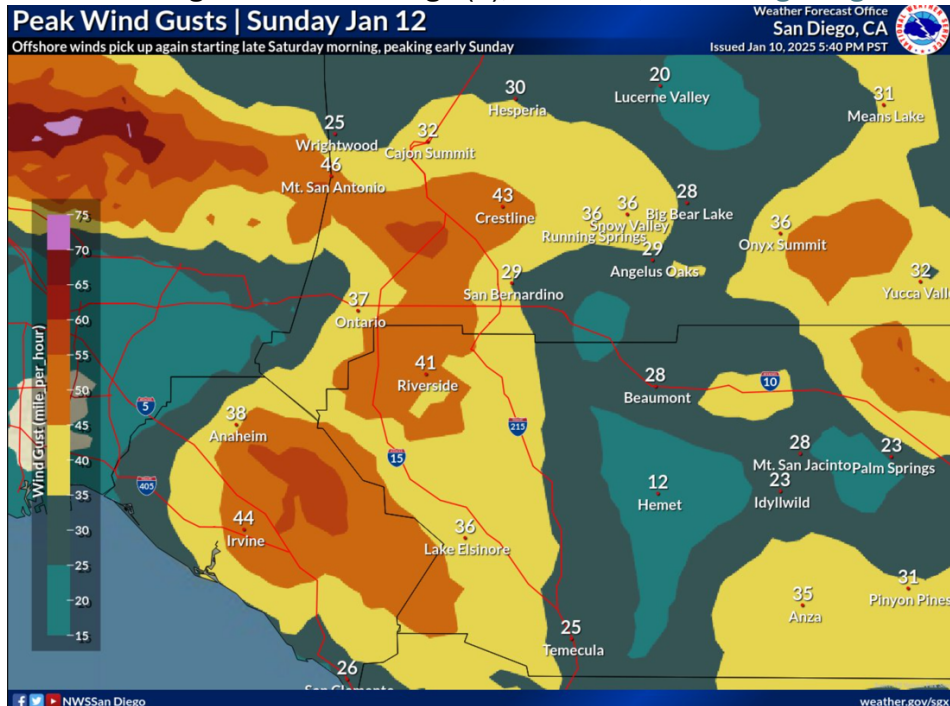
Note: This material will be posted soon on the Dover Shores CERT Web Site at:

<https://www.dovershorescert.org/meetings.html>

Social Media

Posts often:

- NWS San Diego @NWSSanDiego (X), YouTube, [weather.gov/sgx](https://www.weather.gov/sgx)



- NWS Los Angeles @NWSLosAngeles (X), YouTube
- Cal Fire @CAL_FIRE (X)
- OCFA PIO @OCFireAuthority (X)

Rarely post:

- Newport Beach Fire Department @NewportBeachFD (X)
- Newport Beach Police @NewportBeachPD (X)
- City of Newport Beach @newportbeachgov (X)
- Costa Mesa FD @CMFD_PIO
- OC Health Care Agency @ochealth
- Dover Shores CERT @dovershorescert (X)

Interesting:

- Cal Tech Seismo Lab @CalTechSeismo (X)
- Dr. Lucy Jones @DrLucyJones (X)
- NWS Tsunami Alerts @NWS_NTWC (X)

Activation

- Fire – voluntary evacuation? Mandatory we should leave...
- Earthquake – after earthquake with damage?
- If in doubt, call or text Jim or Dan

Barricade Fire Gel

- Useful to apply if you have time... 30-60 minutes...
- Requires hose and water pressure
- Consider gasoline pump for pool water – low water pressure, electricity out
- Note – expensive \$590/ kit

Evacuation – Preplanning

Inside the house

- Pack your ‘Go Bag’ or [Emergency Kit](#), ready to grab
- Check that your [Wildfire Action Plan](#) is up-to-date
- Know your community’s emergency plan, evacuation routes, and destinations
- Close all windows and doors but leave them unlocked
- Take down flammable window treatments like shades and curtains, and close metal shutters
- Clear away light curtains
- Move anything that burns easily to the middle of rooms, away from windows and doors
- Turn off the gas at the meter and pilot lights
- Leave lights on for firefighters to see your house in smoke
- Switch off the air conditioning

Outside the house

- Bring in flammable items from outside, like patio furniture, toys, doormats, and trash bins. Alternatively, place them in your pool
- Shut off propane tanks
- Move grills and other propane BBQ appliances away from the house
- Attach garden hoses to outside taps for firefighter use and fill buckets with water to scatter around
- Don’t leave sprinklers or water running as it can lower critical water pressure.
- Keep exterior lights on to make your home visible in smoky or dark conditions.
- Put your emergency kit in your car
- Park your car in the driveway, facing outwards, loaded and ready, with all doors and windows shut
- Have a ladder handy for firefighter roof access
- Seal attic and ground vents with plywood or commercial seals
- Keep an eye on the fire situation and don’t wait for an evacuation order if you feel at risk
- Check with neighbors to ensure they’re also prepared

Animals

- Keep pets close and ready to go
- Plan for farm animal evacuation early, arranging transport and safe locations

Evacuation Action Plan

Developing a well-thought-out [Wildfire Action Plan](#) is crucial for every household. Tailor your plan to address specific family needs and situations, ensuring everyone is well-prepared ahead of a wildfire.

Your Action Plan should include:

- **Meeting point:** A predetermined meeting location outside high-risk areas to determine who has evacuated from the affected area.
- **Escape routes:** Several escape routes, known to all in your household. Practice these often so everyone in your family knows where to go.
- **Animal arrangements:** Specific arrangements for pets and larger animals, like horses and other livestock.
- **Communication plan:** A [family communication strategy](#) names someone outside the area to be the main contact point for all family members if you get separated or have trouble with phone networks.

The 6 P's of Evacuation

- People & pets
- Papers, phone numbers & important documents
- Prescriptions, vitamins & eyeglasses
- Pictures & irreplaceable memorabilia
 - Scan your albums and store on the web: iCloud, OneDrive, DropBox etc.
 - Scanning service in Irvine: <https://www.scanmyphotos.com/>
- Personal computer, hard drive & disks
- “Plastic” (credit cards, ATM cards) & cash

Pre-evacuation actions

1. Fire extinguisher training
2. Learn utility controls
3. Create an Emergency Supply Kit
4. Add a kit to your vehicle
5. List emergency contacts
6. Access the latest fire updates
7. Share plans with neighbors

Evacuate!

1. Review your [Evacuation Plan Checklist](#).
2. Ensure your [Emergency Supply Kit/Evacuation Bag](#) is in your vehicle.
3. Cover-up to protect against heat and flying embers. Wear long pants, long sleeve shirt, heavy shoes/boots, cap, dry bandanna for face cover, goggles or glasses. 100% cotton is preferable.
4. Locate your pets and take them with you.

Home Hardening

Roofs and Chimneys

- Replace shake roofs!
- Seal gaps under tiles and shingles
- Cover chimneys with screens (good for birds too!)
- Keep flues closed unless in use

Vents and Windows

- Install vent covers – especially soffit vents
- Metal window screens resist embers
- Dual-pane windows are more fire resistant

Walls and Decks

- If remodeling, consider fire resistant walls such as stucco
- Construct decks from ignition-resistant materials
- Remove all flammable materials below decks
- Create defensible space on slopes below decks

Patio Covers and Eaves

- Make sure patio covers are ignition-resistant
- Keep umbrellas closed when practical
- Enclose exposed eaves

Garages and Fences

- Make sure you have a fire extinguisher in the garage
- Apply weather stripping to resist ember intrusion
- Use garage door opener with battery backup for power outages
- Use non-combustible material for house to fence transitions

Rain Gutters and Water Supply

- Keep gutter clear of debris and install metallic covers
- Make sure you have hoses that can reach all parts of house and property
- Consider installing pool pump for water supply

Landscaping

- Remove or minimize landscaping within 5 feet of structures
- Keep landscaping away from under eaves
- Thin landscaping to reduce combustible material
- Avoid combustible mulch